



**Array SiteDirect™ with Extranet Resource Publishing™ is the world's first site-to-site SSL VPN implementation. SiteDirect goes beyond private connectivity offered by traditional solutions to provide the granular access control, deployment flexibility and simplified management required by Extranet environments.**

### ■ The Smarter, Faster Extranet

SiteDirect with Extranet Resource Publishing is an exciting new technology focused on providing site-to-site VPN Extranet connectivity for partners, customers and other third-party access scenarios. While SiteDirect may be used for internal branch connectivity, its primary focus is on providing controlled access to resources in a secure, flexible and easy-to-deploy manner.

Array Networks' new patent-pending SiteDirect Extranet Resource Publishing technology is a direct extension of current security trends that call for network exposure to be kept to a minimum. As opposed to IPSec and other traditional site-to-site access solutions, Resource Publishing does not focus on L2/3 LAN-to-LAN connectivity (which turns two remote networks into one), but rather allows the exposure of specific resources (subnets, servers and applications). The topologies of internal networks are not exposed and administrators have fine-grained control over the resources to be published. Instead of bringing remote users onto the internal network, the required applications are published to the remote network on a white-list basis.

SiteDirect also addresses one of the biggest challenges with traditional site-to-site solutions: administration and installation. Because Array's technology does not force two independent networks to merge, it mitigates issues such as duplicate IP spaces and routing conflicts.

### ■ Conflict-Free Connectivity

Because all traffic is tunneled over SSL (typically TCP port 443), SiteDirect with Extranet Resource Publishing avoids firewall traversal and tunnel NAT traversal issues.

Another key advantage is that each end-point can be configured without any information about the internal topology of the network on the other side. By integrating with existing DHCP and DNS infrastructure, Array's Extranet Resource Publishing provisions resources to or from remote networks and avoids IP conflicts without the need to exchange IP address information or configure NAT rules.

This makes SiteDirect especially well suited for organizations with frequently evolving partner, supplier or customer network environments. Once engagements are over, the administrator simply removes the published resources from availability and network exposure is no longer an issue. Connections can be established as either persistent connections or can be provided on demand – opened and closed upon request, reducing network exposure time even further.

### ■ Ease of Use and Deployment

SiteDirect's conflict-free nature is also useful during mergers and acquisitions. Once the base network is set up, bringing new companies into the environment is trivial. Resource Publishing eliminates the need to set up complex double-

### Array SiteDirect Highlights

- **Ideal for Extranet partner, supplier or customer connectivity, mergers and acquisitions** and organizations with dynamic site-to-site access environments
- **White-list resource publishing of subnets, hosts, and applications** for access control and limited network exposure
- **Eliminates duplicate IP spaces, routing conflicts, firewall and NAT traversal issues** and hides network topologies on both sides of connections
- **Site-to-site connectivity on demand for individual resources** with any mix of established or dynamic connections
- **Hub and spoke or mesh deployments**
- **Performance, encryption and network level connectivity** equivalent to IPSec VPN
- **Rapid configuration of peers and resources via WebUI** in a series of carefully designed and simple steps
- **Consolidated secure access** enables site-to-site and secure remote access to be configured and implemented on a common architecture

NATing rules on firewalls and routers, greatly simplifying operations. It is easy to get up and running by sharing select applications, hosts or sets of subnets that are necessary for integration.

Configuration of SiteDirect peers and resources is performed via the Array SPX WebUI in a series of carefully designed and simple steps.

SiteDirect is available as a dedicated solution or in conjunction with remote access offerings on Array's SPX1800, SPX2800, SPX4800, SPX5800 and SPX6800 platforms. On a system configured for both remote access and SiteDirect, remote users can log into the nearest Array system and leverage a range of resources from multiple networks made available through Extranet Resource Publishing.

## Encryption

- AES
- DES/3DES - SHA/MD5
- TLS support

## VPN

- One SSL tunnel between any 2 peer sites; always-on or on-demand
- TLS and AES enforceable
- VPN tunnel monitoring
- Integrated and interoperable with SPX remote access user connections

## Resource Publishing

- Name
- IP address
- Subnet range
- DHCP server request
- Transparent mode

## Mode of Operation

- Resource publishing by application, host and subnet
- IP address translation for application and host
- Transparent mode for service, host and subnet
- Dynamic port application support for FTP

## Tunnel Type

- Persistent tunnels
- On-demand tunnels

## IP Address Assignment and DNS Support

- IP pool or DHCP client
- SPX as DNS zone authority or primary server

## Routing

- Static routing

## Device Authentication/PKI

- AAA with local DB, RADIUS or LDAP
- Client certificate

## Firewall Features

- DoS and DDoS
- TCP state checking

## Virtualization

- SiteDirect built within a virtual site
- Up to 256 virtual sites per system

## High Availability

- Primary and secondary with clustering

## System Management

- WebUI
- CLI
- SSH
- SNMP/Get only
- XML/RPC
- Tunnel/link status monitoring

## Logging/Monitoring

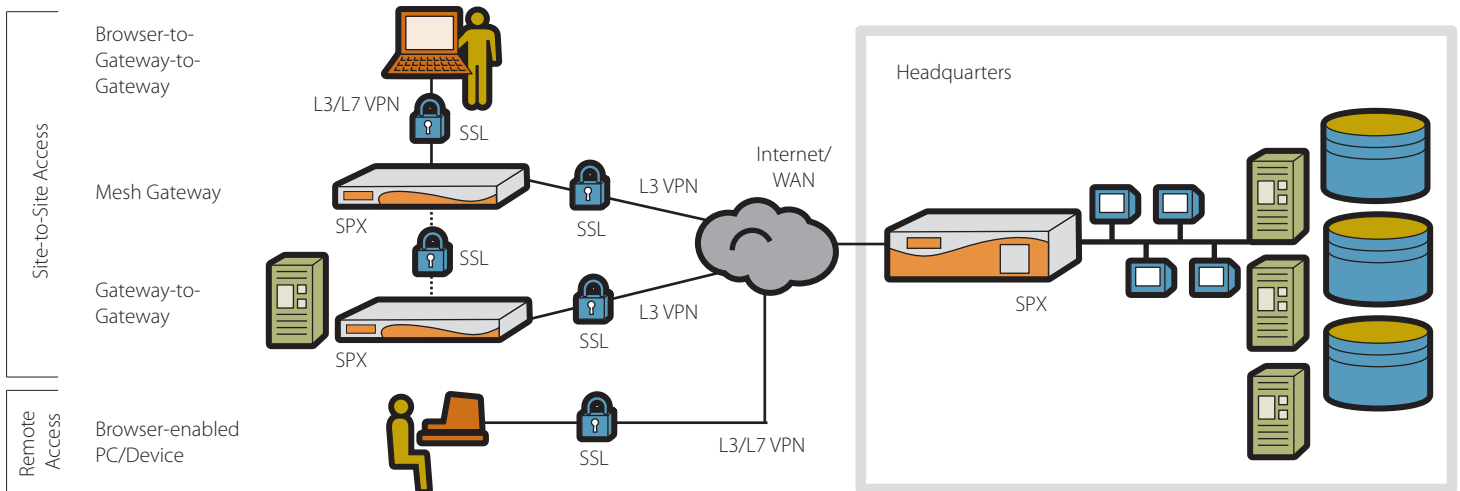
- Syslog
- Alarm/trap
- Traffic log/Web Trend
- Stats/counters, SNMP MIB
- Tunnel monitoring

## Performance & Capacity

- License controlled capacity
- Platform dependent performance

## System Requirements

- Available on all SPX Series platforms
- Requires Array OS version 8.1 SP or higher



	SPX1800	SPX2800	SPX4800	SPX5800	SPX6800
SSL Processing	HW	HW	HW	HW	HW
Compression	SW	SW	SW	SW or HW	SW or HW
Ports	4 Gig Eth	4 Gig Eth	4 Gig Eth	4 Gig E Ports: Optional 2 Fiber	4 Gig E Ports: Optional 2 Fiber or 2 x 10 Gig Fiber
Max Virtual Portals	5	50	256	256	256
Max Site-to-Site Peers	1	5	50	250	250
Throughput	100 Mbps	200 Mbps	400 Mbps	850 Mbps	850 Mbps
Form Factor	1U	1U	1U	2U	2U
Power Supply	Single	Single	Single	Dual	Dual
Clustering	1+1	1+1	N+1	N+1	N+1

SPX1800/  
SPX2800



SPX4800



SPX6800



## Technical Specifications

Support	Bronze, Silver & Gold Level Support Plans	Dimensions	Array SPX1800, 2800, 4800: 17" W X 15" D X 1.75" H or 1U Array SPX5800, 6800: 17" W X 21.5" D X 3.5" H or 2U
Warranty	1-Year Hardware; 90-Day Software	Weight	Array SPX1800, 2800, 4800: 13.6 lbs; SPX5800, 6800: 30 lbs
SPX1800, 2800 & 4800	10/100/1000 Base-TX IP, SecurID, SSH, SSL-TLS, HTTP 1.0/1.1, SNMP	Environmental	Operating Temperature: 0° to 40°C, Humidity: 0% to 90%, Non-condensing SPX1800, 2800, 4800: 100-240VAC, 2.8 A, 47-63Hz, Auto-ranging SPX5800, 6800: 100-240VAC; 6A; 47-63 Hz, Full-range input, Redundant, Hot Swappable
SPX5800 & 6800 Standards	10/100/1000 Base-TX, 1000 Base-SX, 10 Gig e, IP, SecurID, SSH, SSL-TLS, HTTP 1.0/1.1, SNMP	Regulatory compliance	IEC 60950-1, LU/CSA 60950-1, EN 60950-1, ICES-003, EN 55024, CISPR 22, AS/NZS 3548, FCC, 47FR part 15 Class A, VCCI-A
Management	SSH CLI, Direct Console CLI, SNMP, Single Console for Cluster, Array Pilot™ (Secure WebUI) for Array OS, XML-RPC	Safety	CSA, C/US, CE, UL
Console port	Male DB9 Serial (RS232) Port		

